

Calendar Year Addendum to the



# Annual Report of the

## Gambling Control Board

Calendar Year 2005  
January 1 - December 31, 2005

### Highlights

- Gross receipts were \$1,328,672,000 billion.
- State gambling taxes paid \$52,322,000 (net after refund).
- Charitable contributions totaled \$67,382,000.

### Minnesota Gambling Control Board

Suite 300 South  
1711 West County Road B  
Roseville, MN 55113  
651-639-4000

[www.gcb.state.mn.us](http://www.gcb.state.mn.us)

Statistics for this report were provided by the Minnesota Department of Revenue.  
CY 04 means calendar year 2004 (January 1 - December 31, 2004).  
CY 05 means calendar year 2005 (January 1 - December 31, 2005).

**CY2005  
Gross Receipts, Prizes Paid,  
and Gross Profit (net receipts)**

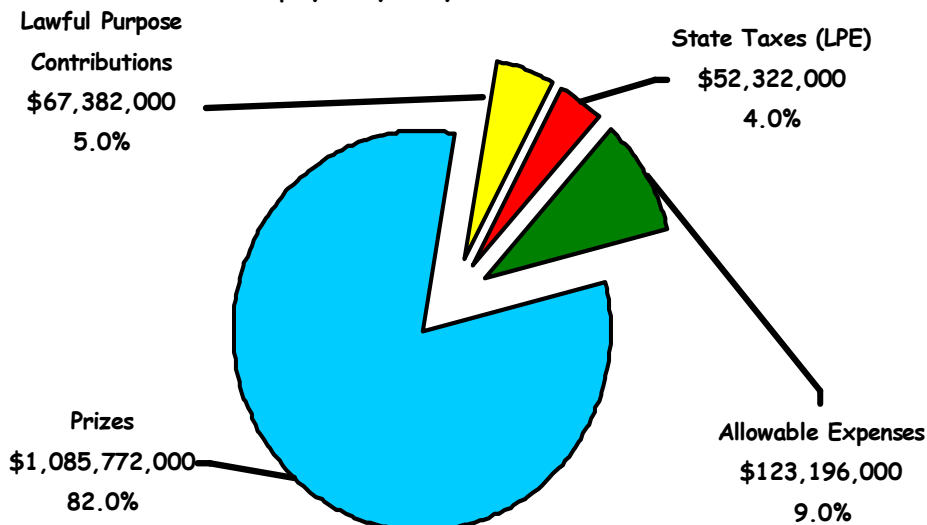
**CY2004  
Gross  
Profit**

**% Change  
in  
Gross  
Profit**

Activity	Gross Receipts	Prizes Paid	Gross Profit	Gross Profit	% Change in Gross Profit
Bingo	\$65,347,000	\$50,762,000	\$14,585,000	\$15,194,000	-4.0
Raffles	5,963,000	3,024,000	2,939,000	2,766,000	6.3
Paddlewheels	16,899,000	13,085,000	3,814,000	4,055,000	-5.9
Tipboards	7,808,000	5,614,000	2,194,000	1,405,000	56.2
Pull-Tabs	1,232,447,000	1,013,287,000	219,160,000	232,500,000	-5.7
Interest Income	208,000	---	208,000	193,000	7.8
<b>TOTALS</b>	<b>\$1,328,672,000</b>	<b>\$1,085,772,000</b>	<b>\$242,900,000</b>	<b>\$256,113,000</b>	<b>-5.2</b>

Prize payout 81.7%    18.3% of gross receipts

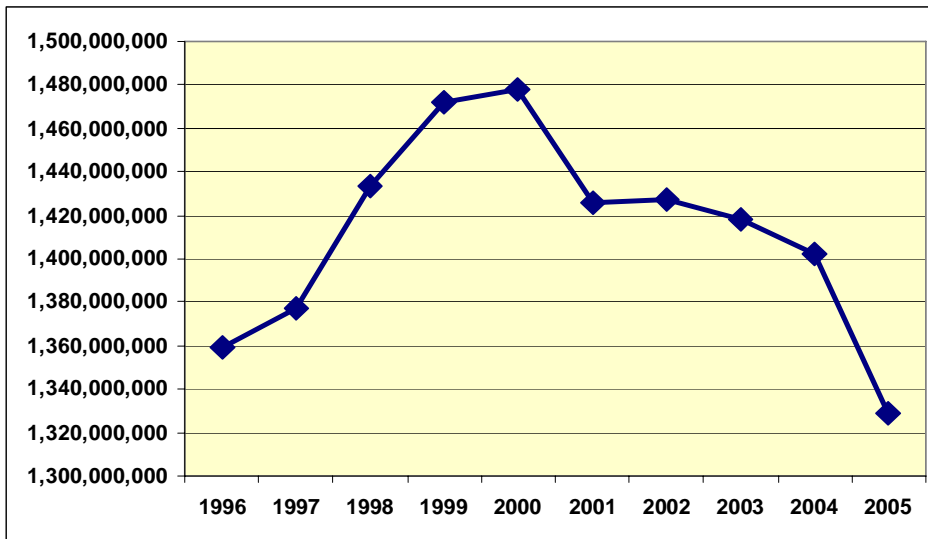
**How Organizations Spent Their Gross Receipts  
\$1,328,672,000**



## Gross Receipts - Comparisons and Trends (amounts wagered)

Activity	2005	% Gross Receipts	2004	% Change
Bingo	\$65,347,000	4.9	\$69,905,000	- 6.5
Raffles	5,963,000	0.4	5,722,000	4.2
Paddlewheels	16,899,000	1.3	17,567,000	- 3.8
Tipboards	7,808,000	0.6	4,063,000	92.2
Pull-Tabs	1,232,447,000	92.8	1,304,923,000	- 5.6
Interest Income	208,000	0.0	193,000	7.8
<b>Total</b>	<b>\$1,328,672,000</b>	<b>100.0</b>	<b>\$1,402,373,000</b>	<b>- 5.3</b>

## Gross Receipts - 10 Year



2005 - \$1,328,672,000  
 2004 - \$1,402,373,000  
 2003 - \$1,418,250,000  
 2002 - \$1,427,550,000  
 2001 - \$1,425,527,000  
 2000 - \$1,477,919,000  
 1999 - \$1,471,840,000  
 1998 - \$1,433,349,000  
 1997 - \$1,377,164,000  
 1996 - \$1,359,192,000

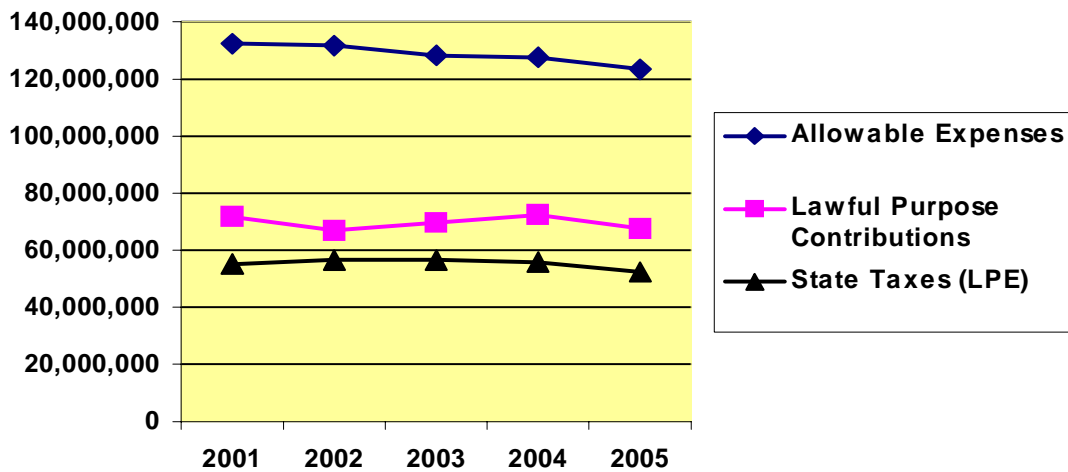
## Monthly Gross Receipts

Month	2005	2004	% Change
January	\$ 108,577, 000	\$ 113,813,000	-4.6
February	111,988,000	115,526,000	-3.1
March	122,758,000	126,654,000	-3.1
April	117,661,000	120,129,000	-2.1
May	113,108,000	118,946,000	-4.9
June	104,128,000	112,208,000	-7.2
July	107,114,000	117,104,000	-8.5
August	107,795,000	117,253,000	-8.1
September	106,652,000	113,289,000	-5.9
October	111,933,000	120,700,000	-7.3
November	106,585,000	112,470,000	- 5.2
December	110,373,000	114,281,000	- 3.4
<b>Total</b>	<b>\$1,328,672,000</b>	<b>\$1,402,373,000</b>	<b>- 5.3</b>

## Five Year Trends

CY	Gross Receipts	Prizes Paid	Gross Profits	Allowable Expenses	Lawful Purpose	
					State Taxes	Lawful Purpose
2005	\$1,328,672,000	\$1,085,772,000	\$242,900,000	\$123,196,000	\$52,322,000	\$67,382,000
2004	1,402,373,000	1,146,260,000	256,113,000	127,293,000	56,146,000	72,674,000
2003	1,418,250,000	1,163,288,000	254,962,000	128,237,000	56,773,000	69,952,000
2002	1,427,550,000	1,172,077,000	255,473,000	131,860,000	56,562,000	67,051,000
2001	1,425,527,000	1,165,971,000	259,556,000	132,117,000	55,438,000	72,001,000

**Five Year Trend for Allowable Expenses, Lawful Purpose, and State Taxes**



## State Gambling Taxes Collected (deposited into general fund)

Month	2005	2004	% Change
January	\$5,314,000	\$5,680,000	-7.8
February	5,784,000	5,902,000	-2.0
March	6,822,000	6,942,000	-1.7
April	6,679,000	6,893,000	-3.1
May	6,576,000	6,855,000	-4.1
June	6,362,000	6,726,000	-5.4
July	2,407,000	2,618,000	-8.1
August	2,879,000	3,075,000	-6.4
September	3,374,000	3,694,000	-8.7
October	3,981,000	4,439,000	-10.3
November	4,440,000	4,802,000	-7.5
December	5,059,000	5,421,000	-6.7
<b>Total</b>	<b>\$59,677,000</b>	<b>\$63,047,000</b>	<b>-5.3</b>
Refunded	7,355,000	6,901,000	6.6
<b>Total tax</b>	<b>\$52,322,000</b>	<b>\$56,146,000</b>	<b>-6.8</b>

### 1.7% Gross receipts tax on pull-tab and tipboard games

CY05 \$21,036,000

CY04 \$22,822,000

Percent change -7.8%

### 8.5% Net receipts tax on bingo, raffles, and paddlewheels

CY05 \$1,832,000

CY04 \$1,883,000

Percent change -2.7%

### Combined receipts tax, a progressive tax on pull-tab and tipboard gross receipts and interest income that is calculated on a fiscal year basis

CY05 \$29,454,000

CY04 \$31,441,000

Percent change -6.3%